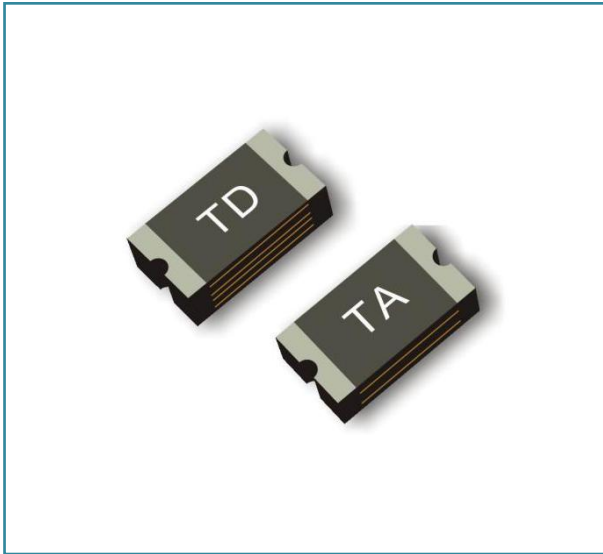


Low Loss Surface Mount 1206 Series





Applications

- USB peripherals including new USB 3.0 / 2.0 ports
- Li-ion / Li-Polymer battery packs
- Smart phones
- Tablet and Notebook PCs
- E-readers
- LCD / LED HDTV
- Computer peripherals
- Digital cameras and video cameras
- Hard disk drives
- Game consoles

Features

- Surface Mount Devices
- Standard 1206mils footprint
- Surface Mount packaging for automated assembly
- Compatible with Pb and Pb-free solder reflow profiles

Agency Approvals

AGENCY	AGENCY FILE NUMBER
	E352136
	R50306075

Regulation/Standard



Electrical Characteristics

P/N	I _{hold} (A)	I _{trip} (A)	V _{max} (V)	I _{max} (A)	Time To Trip		Pd _{typ} (W)	Resistance		Agency Approvals	
					Current (A)	Time (Sec.)		R _{min} (Ω)	R _{I_max} (Ω)	UL	TUV
TLC-NSML110	1.10	2.20	6	50	8.00	0.30	1.20	0.015	0.100	√	√
TLC-NSML150	1.50	3.00	6	50	8.00	0.30	1.20	0.010	0.065	√	√
TLC-NSML175	1.75	3.50	6	50	8.00	1.00	1.20	0.005	0.055	√	√
TLC-NSML190	1.90	4.90	6	50	8.00	5.00	1.20	0.010	0.060	√	√
TLC-NSML200	2.00	4.00	6	50	8.00	1.00	1.20	0.005	0.055	√	√
TLC-NSML200/12	2.00	4.00	12	50	8.00	5.00	1.20	0.008	0.040	√	×
TLC-NSML260	2.60	5.00	6	50	8.00	4.00	1.20	0.003	0.035	√	√
TLC-NSML300	3.00	6.00	6	50	8.00	5.00	1.20	0.003	0.020	√	√
TLC-NSML300/12	3.00	6.00	12	50	8.00	5.00	1.20	0.003	0.020	√	×
TLC-NSML350	3.50	9.00	6	50	18.5	2.00	1.20	0.003	0.030	√	√
TLC-NSML350/12	3.50	7.00	12	50	8.00	5.00	1.50	0.003	0.018	√	×
TLC-NSML380	3.80	8.00	6	50	20.0	2.00	1.20	0.003	0.022	√	√
TLC-NSML400	4.00	8.00	6	50	20.0	2.00	1.20	0.003	0.020	√	√
TLC-NSML400/12	4.00	8.00	12	50	8.00	5.00	1.20	0.003	0.014	√	×
TLC-NSML450	4.50	9.00	6	50	22.5	2.00	1.50	0.002	0.018	√	√
TLC-NSML450/12	4.50	9.00	12	50	22.5	5.00	1.50	0.002	0.014	√	×

TLC-NSML500	5.00	10.00	6	50	25.0	2.00	1.50	0.002	0.018	√	√
TLC-NSML500/12	5.00	10.00	12	50	25.0	5.00	1.50	0.002	0.013	√	×
TLC-NSML550	5.50	11.00	6	50	27.5	2.00	1.50	0.002	0.018	√	√
TLC-NSML600	6.00	12.00	6	50	30.0	2.00	1.50	0.001	0.018	√	√
TLC-NSML650	6.50	13.00	6	50	32.5	2.00	1.50	0.001	0.018	√	√
TLC-NSML700	7.00	14.00	6	50	35.0	2.00	1.50	0.001	0.017	√	√
TLC-NSML750	7.50	15.00	6	50	38.75	2.00	1.50	0.001	0.017	√	√

I_{hold} : Holding Current: maximum current at which the device will not trip in 25°C still air.

I_{trip} : Tripping Current minimum current at which the device will trip in 25°C still air.

V_{max} : Maximum voltage device can withstand without damage at rated current.

I_{max} : Maximum fault current device can withstand without damage at rated voltage.

Time To Trip: Maximum time to trip(s) at assigned current.

Pd_{typ} : Rated working power.

R_{min} : Minimum resistance of device prior to trip at 25°C.

$R1_{max}$: Maximum resistance of device is measured one hours post reflow at 25°C.

Noted: All electrical function test is conducted after PCB mounted.

Thermal Derating Chart – I_{hold}/I_{trip} (Amps)

P/N	Test item	Ambient Operating Temperature								
		-40°C	-20°C	0°C	25°C	40°C	50°C	60°C	70°C	85°C
TLC-NSML110	I-hold	1.65	1.43	1.27	1.10	0.94	0.83	0.73	0.61	0.44
	I-trip	3.60	3.15	2.80	2.50	2.00	1.85	1.60	1.35	0.97
TLC-NSML150	I-hold	2.25	1.95	1.73	1.50	1.28	1.13	1.00	0.83	0.60
	I-trip	5.20	4.50	3.95	3.50	2.95	2.60	2.30	1.90	1.40
TLC-NSML175	I-hold	2.63	2.28	2.01	1.75	1.49	1.31	1.17	0.96	0.70
	I-trip	5.30	4.60	4.10	3.50	3.00	2.70	2.40	2.00	1.50
TLC-NSML190	I-hold	2.85	2.47	2.19	1.9	1.62	1.5	1.43	1.27	1.05
	I-trip	5.70	4.94	4.38	3.80	3.24	3.00	2.86	2.54	2.10
TLC-NSML200	I-hold	3.00	2.60	2.30	2.00	1.70	1.50	1.33	1.10	0.80
	I-trip	6.00	5.20	4.60	4.00	3.40	3.00	2.67	2.20	1.60
TLC-NSML200/12	I-hold	2.68	2.33	2.15	2.00	1.55	1.57	1.50	1.44	0.88
	I-trip	5.36	5.36	5.36	5.36	5.36	5.36	5.36	5.36	5.36
TLC-NSML260	I-hold	3.50	3.05	2.85	2.60	2.15	1.95	1.80	1.50	1.05
	I-trip	7.00	6.10	5.70	5.20	4.30	3.90	3.60	3.00	2.10
TLC-NSML300	I-hold	4.50	3.90	3.45	3.00	2.55	2.25	2.00	1.65	1.20
	I-trip	9.00	7.80	6.91	6.00	5.11	4.51	4.00	3.31	2.40
TLC-NSML300/12	I-hold	4.50	3.90	3.45	3.00	2.55	2.25	2.00	1.65	1.20
	I-trip	9.00	7.80	6.91	6.00	5.11	4.51	4.00	3.31	2.40
TLC-NSML350	I-hold	5.25	4.55	4.03	3.50	2.98	2.63	2.33	1.93	1.40
	I-trip	10.50	9.10	8.06	7.00	5.96	5.26	4.67	3.86	2.80
TLC-NSML350/12	I-hold	5.25	4.55	4.03	3.50	2.98	2.63	2.33	1.93	1.40
	I-trip	10.50	9.10	8.06	7.00	5.96	5.26	4.67	3.86	2.80
	I-hold	5.70	4.94	4.37	3.80	3.23	2.85	2.53	2.09	1.52

TLC-NSML380	I-trip	11.40	9.88	8.75	7.60	6.47	5.71	5.07	4.19	3.04
TLC-NSML400	I-hold	6.00	5.20	4.60	4.00	3.40	3.00	2.67	2.20	1.60
	I-trip	12.00	10.40	9.21	8.00	6.81	6.01	5.33	4.41	3.20
TLC-NSML400/12	I-hold	6.00	5.20	4.60	4.00	3.40	3.00	2.67	2.20	1.60
	I-trip	12.00	10.40	9.21	8.00	6.81	6.01	5.33	4.41	3.20
TLC-NSML450	I-hold	6.75	5.85	5.18	4.50	3.83	3.38	3.00	2.48	1.80
	I-trip	13.50	11.70	10.35	9.00	7.65	6.75	6.00	4.95	3.60
TLC-NSML450/12	I-hold	6.20	5.65	5.25	4.50	4.15	3.45	3.15	3.00	2.40
	I-trip	12.4	11.30	10.50	9.00	8.30	6.90	6.30	6.00	4.80
TLC-NSML500	I-hold	7.50	6.50	5.76	5.00	4.26	3.76	3.30	2.76	2.00
	I-trip	15.00	13.00	11.51	10.00	8.51	7.51	6.60	5.51	4.00
TLC-NSML500/12	I-hold	7.50	6.50	5.76	5.00	4.26	3.76	3.30	2.76	2.00
	I-trip	15.00	13.00	11.51	10.00	8.51	7.51	6.60	5.51	4.00
TLC-NSML550	I-hold	8.25	7.15	6.33	5.50	4.68	4.13	3.67	3.03	2.20
	I-trip	16.50	14.30	12.66	11.00	9.36	8.26	7.33	6.06	4.40
TLC-NSML600	I-hold	9.00	7.80	6.91	6.00	5.11	4.51	4.00	3.31	2.40
	I-trip	18.00	15.60	13.81	12.00	10.21	9.01	8.00	6.61	4.80
TLC-NSML650	I-hold	9.75	8.45	7.48	6.50	5.53	4.88	4.33	3.58	2.60
	I-trip	19.50	16.90	14.96	13.00	11.06	9.76	8.67	7.16	5.20
TLC-NSML700	I-hold	10.50	9.10	8.06	7.00	5.96	5.26	4.67	3.86	2.80
	I-trip	21.00	18.20	16.12	14.00	11.92	10.52	9.33	7.72	5.60
TLC-NSML750	I-hold	11.25	9.75	8.63	7.50	6.38	5.63	5.00	4.13	3.00
	I-trip	22.50	19.50	17.27	15.00	12.77	11.27	10.00	8.27	6.00

Notes: The temperature rerating data is for reference only. Please contact TLC technical support for detail temperature rerating information.

Reliability Requirement

Humidity Aging	+85°C, 85% R.H.,1000 hours R≤R1max Typical
Passive Aging	+85°C, 1000 hours R≤R1max Typical
Thermal Shock	30min@-40°C~30min@85°C, ,20cycles R≤R1max Typical
Resistance to Solvents	MIL-STD-202, Method 215 Marking Still legible
Vibration	MIL-STD-833C,Method 2007.1,Condition A R min. < R i <R1max
Solderability	245°C±5°C, 5 Seconds >95% coverage

Environmental Characteristics

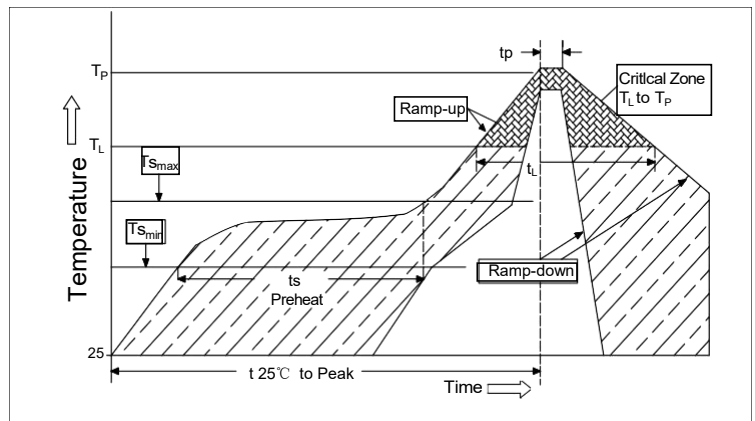
Operating/Storage Temperature -40 °C to +85 °C

Maximum Device Surface Temperature in Tripped State 125 °C

Storage Conditions+40 °C Max. 70% RH Max. Packed in original packaging.

Solder Reflow Conditions

Reflow Profile	Lead free
Heating rate from T _{smax} to T _p	Max.3°C/second
Pre-heat:	
T _{smin}	150°C
T _{smax}	200°C
T _{smin} to T _{smax}	60~180seconds
Soldering time:	
Temperature (T _L) Time (t _L)	>217°C 60~150seconds
Peak temperature (T _p)	260°C
Time at Peak temperature ±5°C (t _p)	20~40seconds
Cooling rate	Max.6°C/second
Time from 25°C to Peak Temperature	8 minutes max

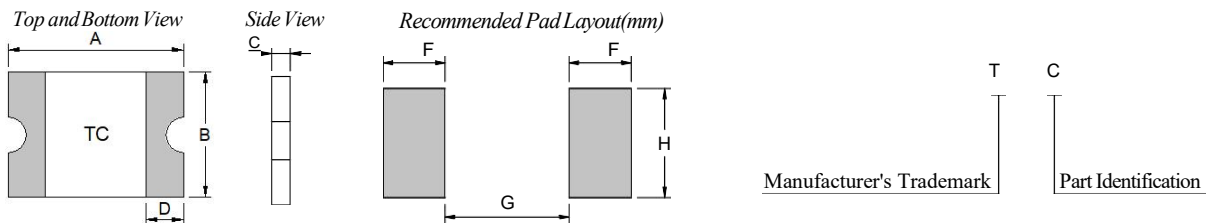


Warning for Reflow:

- 1、 The printed solder thickness is not over 0.25mm, Excess solder may cause a short circuit, especially during hand soldering
- 2、 If reflow temperatures exceed the recommended profile, devices may not meet the performance requirements
- 3、 Device can not be wave soldered. Please contact TLC for hand soldering and dip soldering recommendations.
- 4、 Device can't contact solvent

Note: All temperature in top chart is measured on the surface of devices

Product Dimensions & Marking (Unit: mm)



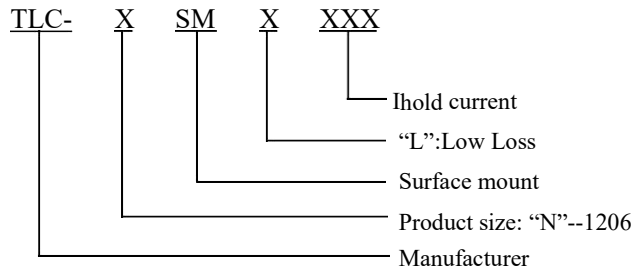
P/N	Marking	Device Dimension							Recommended Pad Layout(mm)		
		A		B		C		D	F	G	H
		Min.	Max.	Min.	Max.	Min.	Max.	Min.	Nor.	Nor.	Nor.
TLC-NSML110	TC	3.00	3.50	1.50	1.80	0.55	0.85	0.25	1.00	2.00	1.60
TLC-NSML150	T1	3.00	3.50	1.50	1.80	0.50	0.80	0.25	1.00	2.00	1.60
TLC-NSML175	T2	3.00	3.50	1.50	1.80	0.50	0.80	0.25	1.00	2.00	1.60
TLC-NSML190	T3	3.00	3.50	1.50	1.80	0.50	0.80	0.25	1.00	2.00	1.60
TLC-NSML200	TD	3.00	3.50	1.50	1.80	0.50	0.80	0.25	1.00	2.00	1.60
TLC-NSML200/12	TD	3.00	3.50	1.50	1.80	0.40	0.80	0.25	1.00	2.00	1.60
TLC-NSML260	TE	3.00	3.50	1.50	1.80	0.40	0.80	0.25	1.00	2.00	1.60
TLC-NSML300	TF	3.00	3.50	1.50	1.80	0.40	0.80	0.25	1.00	2.00	1.60
TLC-NSML300/12	TF	3.00	3.50	1.50	1.80	0.40	0.80	0.25	1.00	2.00	1.60
TLC-NSML350	T4	3.00	3.50	1.40	1.80	0.70	1.05	0.25	1.00	2.00	1.60

TLC-NSML350/12	T4	3.00	3.50	1.50	1.80	0.50	1.00	0.25	1.00	2.00	1.60
TLC-NSML380	TH	3.00	3.50	1.40	1.80	0.70	1.05	0.25	1.00	2.00	1.60
TLC-NSML400	TI	3.00	3.50	1.40	1.80	0.70	1.05	0.25	1.00	2.00	1.60
TLC-NSML400/12	TI	3.00	3.50	1.40	1.80	0.70	1.05	0.25	1.00	2.00	1.60
TLC-NSML450	TK	3.00	3.50	1.40	1.80	0.70	1.05	0.25	1.00	2.00	1.60
TLC-NSML450/12	T45	3.00	3.50	1.40	1.80	0.70	1.15	0.25	1.00	2.00	1.60
TLC-NSML500	TL	3.00	3.50	1.40	1.80	0.70	1.05	0.25	1.00	2.00	1.60
TLC-NSML500/12	T50	3.00	3.50	1.40	1.80	0.80	1.40	0.25	1.00	2.00	1.60
TLC-NSML550	TN	3.00	3.50	1.40	1.80	0.70	1.05	0.25	1.00	2.00	1.60
TLC-NSML600	TO	3.00	3.50	1.40	1.80	0.90	1.40	0.25	1.00	2.00	1.60
TLC-NSML650	TP	3.00	3.50	1.4	1.8	0.90	1.40	0.25	1.00	2.00	1.60
TLC-NSML700	TR	3.00	3.50	1.4	1.8	0.90	1.40	0.25	1.00	2.00	1.60
TLC-NSML750	TS	3.00	3.50	1.40	1.80	0.90	1.40	0.25	1.00	2.00	1.60

Packaging

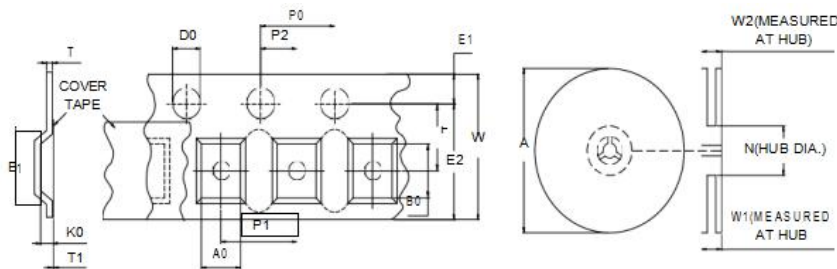
TLC-NSML110	1206	Tape&Reel	4000
TLC-NSML150	1206	Tape&Reel	4000
TLC-NSML175	1206	Tape&Reel	4000
TLC-NSML190	1206	Tape&Reel	4000
TLC-NSML200	1206	Tape&Reel	4000
TLC-NSML200/12	1206	Tape&Reel	4000
TLC-NSML260	1206	Tape&Reel	4000
TLC-NSML300	1206	Tape&Reel	4000
TLC-NSML300/12	1206	Tape&Reel	4000
TLC-NSML350	1206	Tape&Reel	3500
TLC-NSML350/12	1206	Tape&Reel	3500
TLC-NSML380	1206	Tape&Reel	3500
TLC-NSML400	1206	Tape&Reel	3500
TLC-NSML400/12	1206	Tape&Reel	3500
TLC-NSML450	1206	Tape&Reel	3500
TLC-NSML450/12	1206	Tape&Reel	3500
TLC-NSML500	1206	Tape&Reel	3500
TLC-NSML500/12	1206	Tape&Reel	3000
TLC-NSML550	1206	Tape&Reel	3500
TLC-NSML600	1206	Tape&Reel	3000
TLC-NSML650	1206	Tape&Reel	3000
TLC-NSML700	1206	Tape&Reel	3000
TLC-NSML750	1206	Tape&Reel	3000

Product Ordering Number System



Tape and Reel Specifications

Dimensions for 1206 size product (see table below)



	TLC-NSML110	TLC-NSML300/12	TLC-NSML500
	TLC-NSML150	TLC-NSML350/12	TLC-NSML500/12
	TLC-NSML175	TLC-NSML350	TLC-NSML550
	TLC-NSML190	TLC-NSML380	TLC-NSML600
	TLC-NSML200	TLC-NSML400	TLC-NSML650
	TLC-NSML200/12	TLC-NSML400/12	TLC-NSML700
	TLC-NSML260	TLC-NSML450	TLC-NSML750
	TLC-NSML300	TLC-NSML450/12	
TAPE DIMENSIONS: EIA-481-1(mm)			
W	8.00±0.30	8.00±0.30	8.00±0.30
P0	4.00±0.10	4.00±0.10	4.00±0.10
P1	4.00±0.10	4.00±0.10	4.00±0.10
P2	2.00±0.05	2.00±0.05	2.00±0.05
A0	1.90±0.10	1.95±0.10	1.95±0.10
B0	3.50±0.10	3.55±0.10	3.55±0.10
B1max	4.35	4.35	4.35
D0	1.50+0.10/-0.00	1.50+0.10/-0.00	1.50+0.10/-0.00
F	3.50±0.05	3.50±0.05	3.50±0.05
E1	1.75±0.10	1.75±0.10	1.75±0.10
E2min	6.25	6.25	6.25
T max	0.60	0.60	0.60
T1min	0.10	0.10	0.10
K0	1.00±0.10	1.25±0.10	1.25±0.10
Leader min	390		
Trailer min	160		
Reel Dimensions: EIA-481-1(mm)			
A max	185		
N min	50		
W1	8.4+1.5/-0		
W2 max	14.4		

Cautions for SMD PPTC Use
SMD PTC 使用注意事项

1. Operation beyond the rated maximum voltage or current may result in device damage and possible electrical arcing or flame
请在规格书规定的最大电压和最大电流下使用,超出 PTC 最大电压或最大电流规格值的操作,可能会导致 PTC 出现电弧,阻值升高,甚至烧片。
2. Hold current at all temperatures specified in the SPEC is the conventional performance of PTC obtained by one time reflow welding. PTC can hold 1 hour under current conditions at a given temperature. This current is not the condition of long-term charging or discharging current for this type of PTC.
规格书所规定的各温度下的额定电流均是 PTC 经过一次回流焊接得出的常规性能,PTC 能够在不同温度对应的电流条件下保持 1 小时。该电流并不是该型号 PTC 能够适用的长期充电或放电电流的条件。
3. The above parameters are concluded from one time of reflow soldering processing the PTC. If there is any further heat generated process like injection or dispensing at the customer's premise, the aforementioned parameters will decrease at certain degree. Therefore the verification test to be conducted is necessary.
规格书所规定的电阻以及电气特性,均是基于在我司指定测试板经过一次回流焊之后的测试。如果客户有二次回流焊或者注塑点胶等其他热工序,会对上述参数有一定程度的衰减。所以需要验证其适用性。
4. The PTC is thermal sensitive device. It is recommended not to design any heat source devices around it to reduce the outside heat source impact.
PTC 为热敏元件,对环境温度比较敏感,建议在 PTC 周围不要设计热源元件,尽量减少外部热源的影响。
5. SMD PTC is designed for SMT processing which applies reflow soldering. Please refer to the recommended solder reflow curve. If the reflow soldering temperature exceeds the recommended value, the PTC might be damaged. Hand welding PTC is prohibited. Heat gun is not allowed to use during the circuit board components or terminals rework.
PTC 贴片产品是为 SMT 工艺设计的封装形式,焊接工艺为回流焊。焊接工艺可参考推荐的回流焊曲线。如果回流焊温度超过推荐的值,PTC 将有可能受到损伤。禁止使用手工焊接 PTC,禁止对线路板其他元件或端子返工时使用热风枪。
6. When mounting or using PTC, all injection molding materials, curing adhesives, UV glue, silica gel and cleaning agents or solvents must be tested in terms of application parameters e.g. temperature, time, and etc to ensure the consistency between the product and the processing before use.
PTC 贴装或应用过程中,所使用到的各类注塑料、单组份、双组份固化胶粘剂、硅胶,需要对注塑料胶料等材料牌号以及应用参数(如温度、时间等)进行验证,以确保产品及工艺的匹配性,确认不会影响 PTC 性能之后方可使用。
7. When mounting or using PTC, it is not recommended to use circuit board washer water or other cleaning agent. If cleaning is required, it is necessary to verify the applicability of various cleaning agents, washboard water and solvents, and confirm that they will not affect the PTC performance. The known chemicals that impacts PTC include but not limited to ethers, benzene homolog, ketones, lipids and derivatives that is of strong solubleness and ruinous. Please place the product in open environment for at least 24 hours to volatilize solvents residuals.
PTC 贴装或使用过程中,不建议使用洗板水或其他清洗剂进行清洗。如必须使用,需要验证各类清洗剂、洗板水以及溶剂的适用性,确认不会影响 PTC 性能之后方可使用。已知对 PTC 有影响的化学药品包括但不限于醚类、苯类、酮类以及脂类等较强溶解性、破坏性的有机化合物。清洗后将产品放置于敞开的空气中至少 24 小时,将残留的溶剂进行充分的挥发。
8. Please do not smash, clamp, pull, dent or twist by tool during assembling process otherwise it might be a cause of the performance degradation.
装配过程中,避免用暴力砸、挤、压、拉、扭、刺等方式作用 PTC 本体,以免引起 PTC 性能衰减。
9. When PTC is welded to the PCM in product application, if injection or gluing is needed, it should be completed in as short a time as possible. If the time slot between mounting and injection or gluing surpasses 1 month, please keep in airtight environment to avoid long air exposure.
在产品应用中,PTC 焊接至保护板后,如需注塑或打胶,须在尽量短的时间内完成,如贴装与注塑打胶时间间隔超过1个月,则需密闭保存,可避免 PTC 长时间暴露于空气环境中。
10. PTC is resettable protection device which shall not be taken for use as switch. Multiple times tripping shall lower the PTC hold current.
PTC 为自恢复保护元件,但不能当做开关使用,重复多次的保护会降低 PTC 的维持电流。
11. In charging terminal application, PP type material is recommended to use as inner membrane and TPE and PVC type material is inhibited.
PTC 在充电线端应用中,建议使用 PP 类材料做内膜,禁止使用 TPE 类与 PVC 类等材料做内膜。
12. In the process of PTC processing, if there is soldering iron welding process, it is suggested that the welding position should be more than 1.5mm away from PTC, the welding tool temperature should be lower than 350 °C, and the contact time between soldering iron and solder joint should not exceed 3sec.
PTC 在加工过程中,如有烙铁焊接工艺,建议焊接位置距离 PTC 1.5mm 以上,焊接工具温度低于 350°C,焊接铁头与焊点的接触时间不超过 3sec。
13. Low resistance SMD PTC humidity sensitivity grade 2, for sealed packaging. If customers find damaged packaging in stock, they should isolate the product immediately; if there is surplus material, they need to restore the packaging status, and do sealed storage.
低阻 SMD PTC 湿敏等级为 2 级,为密封包装。客户如在库存中发现有包装破损的,立即将产品隔离处理;使用时如有余料,需恢复之前包装状态,做密封保存。